

**NOTRE DAME SUBZONE**

- undivided igneous & sedimentary rocks
- Buchans Group

**EXPLOITS SUBZONE**

**Devonian & Older**

- Redcross Lake Intrusion
- Rogerson Lake Conglomerate

**Ordovician & Older**

- Badger Group
- Red Cross Group (~475-455 Ma)

**Victoria Lake Supergroup**

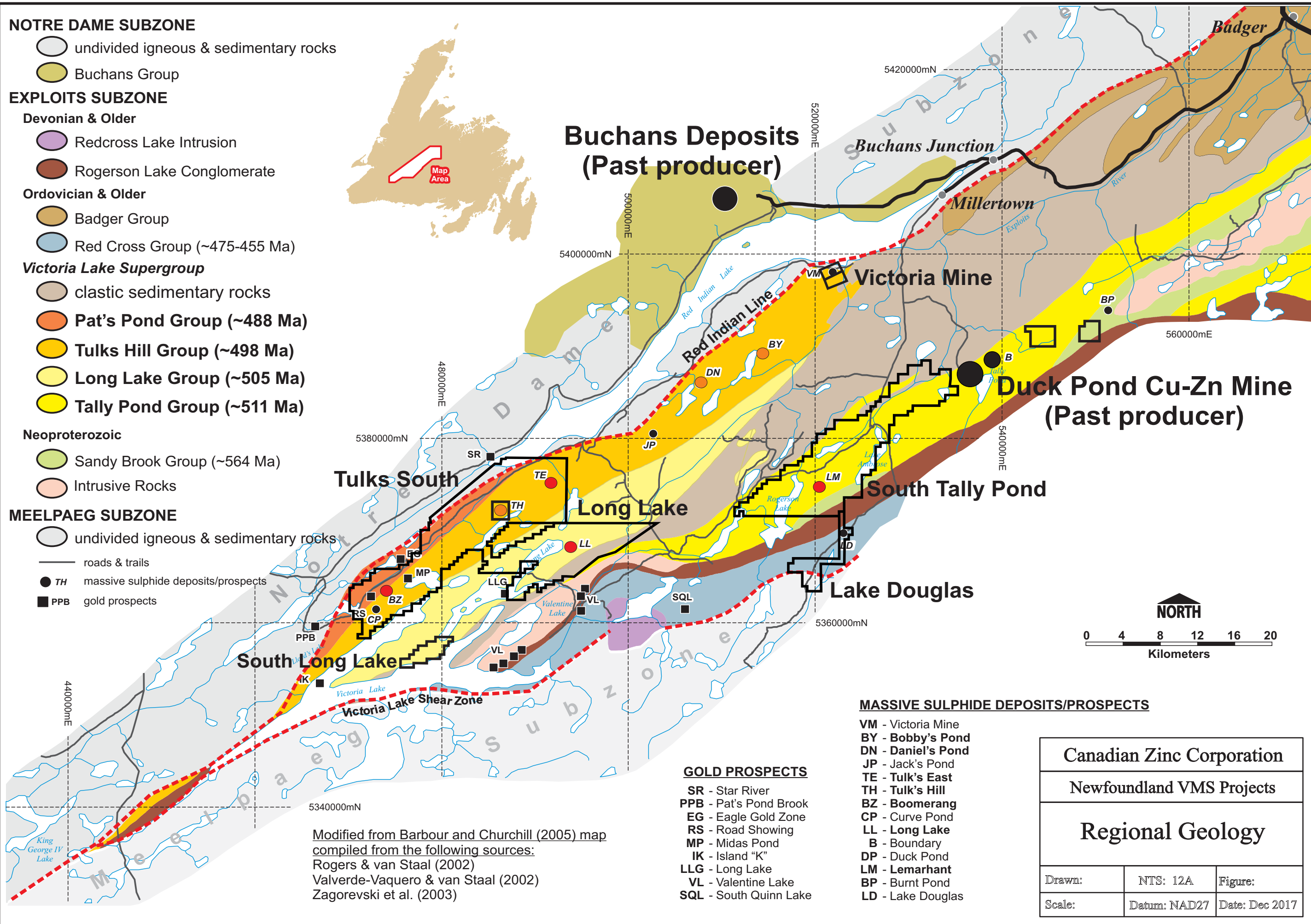
- clastic sedimentary rocks
- Pat's Pond Group (~488 Ma)
- Tulks Hill Group (~498 Ma)
- Long Lake Group (~505 Ma)
- Tally Pond Group (~511 Ma)

**Neoproterozoic**

- Sandy Brook Group (~564 Ma)
- Intrusive Rocks

**MEELPAEG SUBZONE**

- undivided igneous & sedimentary rocks
- roads & trails
- TH massive sulphide deposits/prospects
- PPB gold prospects



**Buchans Deposits  
(Past producer)**

*Buchans Junction*

*Millertown*

**Victoria Mine**

**Duck Pond Cu-Zn Mine  
(Past producer)**

**Tulks South**

**Long Lake**

**South Tally Pond**

**Lake Douglas**

**South Long Lake**

*Victoria Lake Shear Zone*

**MASSIVE SULPHIDE DEPOSITS/PROSPECTS**

- VM - Victoria Mine
- BY - Bobby's Pond
- DN - Daniel's Pond
- JP - Jack's Pond
- TE - Tulk's East
- TH - Tulk's Hill
- BZ - Boomerang
- CP - Curve Pond
- LL - Long Lake
- B - Boundary
- DP - Duck Pond
- LM - Lemarhant
- BP - Burnt Pond
- LD - Lake Douglas

**GOLD PROSPECTS**

- SR - Star River
- PPB - Pat's Pond Brook
- EG - Eagle Gold Zone
- RS - Road Showing
- MP - Midas Pond
- IK - Island "K"
- LLG - Long Lake
- VL - Valentine Lake
- SQL - South Quinn Lake

Modified from Barbour and Churchill (2005) map  
compiled from the following sources:  
Rogers & van Staal (2002)  
Valverde-Vaquero & van Staal (2002)  
Zagorevski et al. (2003)

<b>Canadian Zinc Corporation</b>		
<b>Newfoundland VMS Projects</b>		
<b>Regional Geology</b>		
Drawn:	NTS: 12A	Figure:
Scale:	Datum: NAD27	Date: Dec 2017